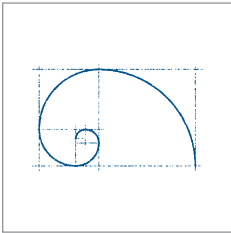
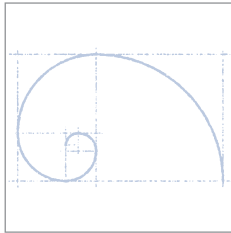


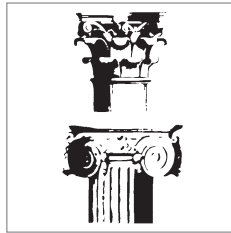
Supplied Images



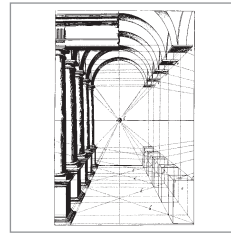
GB00407-IMG01.TIF



GB00407-IMG02.TIF



GB00407-IMG03.TIF



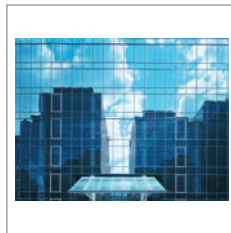
GB00407-IMG04.TIF



GB00407-IMG05.JPG



GB00407-IMG06.JPG



GB00407-IMG07.JPG

Fonts (Fonts are not included with the Layout)

Layout files use standard fonts – Times Roman, Helvetica for Mac and New Times Roman, Arial for PC.

Suggested Fonts

Jenson MM 371
Jenson MM SC 371
Frutiger Light
Frutiger Light Italic

Manufacturer

Adobe
Adobe
Adobe
Adobe

Customizing the Layout and Style Sheets

To update fonts, simply modify the pre-defined style sheets then search and replace fonts in your application. Style sheets have been used to format the Layout's text content. Style sheets control font, size, color, paragraph indents and spacing throughout the Layout. Refer to your application documentation for information about using style sheets. For more information about customizing your Design Layout, visit Support at www.stocklayouts.com.

Prepress and Printing

Design Layouts have been produced to print in four-color process CMYK or multiple PMS colors, and are press-ready. Photographic images included with the Layout are high-resolution 300 dpi. Bitmap line art graphics are 800 dpi. For best results, files should be output to film or direct-to-plate using a 150 lpi screen setting. Check with your prepress provider or commercial printer regarding special printing techniques. Layouts and images are fully customizable and can be modified to accommodate one or two color printing.

GB00407

Ads



Architectural Firm

Color: **4 (CMYK)**
Page Size: **Multiple**
No. of Pages: **3**
Fold: **No Fold**

Need Help Customizing
your Layout?

Want to Purchase
Additional Layouts,
Fonts or Images?

Visit our website for
valuable designers
resources and for
additional designs
in this series.

www.stocklayouts.com

Customer Service:

E-Mail: support@stocklayouts.com

Phone: 1-877-833-3305
8:00 am to 5:00 pm (Pacific)
Monday to Friday